



CRS510-8XS-2XQ-IN

A versatile 100 Gigabit switch that offers speed, value, and diverse connectivity options.

It's time to upgrade your 10 or 25 Gigabit network!



**2X 100 GIGABIT
QSFP28 PORTS**



**8X 25 GIGABIT
SFP28 PORTS**



**MULTIPLE
POWERING OPTIONS:
POE-IN, DC JACK, 2-PIN TERMINAL, AC**



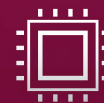
**DUAL HOT-SWAP
POWER SUPPLIES**



**BACKWARD COMPATIBLE
WITH 40G, 25G, 10G, AND
1G CONNECTIONS**



**COMPACT & ENERGY
EFFICIENT!**



**16X 25 GIGABIT MARVELL
PRESTERA SWITCH CHIP**

Remember our sensational 100 Gigabit switches – the CRS504 and CRS518? It's time for another breathtaking addition to the **MikroTik 100 Gigabit product family**: the versatile CRS510-8XS-2XQ-IN!



This handy switch has **two 100 Gigabit QSFP28 ports** and **eight 25 Gigabit SFP28 ports**. This combination of ports guarantees a perfect fit in almost any setup or server room. Various direct attach cables, active optical cables, copper RJ45's... **CRS510 will keep everything connected!** You'll save time, money, and precious nerve cells with the **backward compatibility**. This unit supports all sorts of devices – 40 Gigabit, 25 Gigabit, 10 Gigabit, and even older Gigabit connections. And – speaking of nerve cells – we've kept the sysadmin's emergency tool: the good old **console port**.

Another reason why we love the new CRS510 (and you will too!) is the performance. It can handle **VLANs, ACL, MLAG, Jumbo frames**, and so much more – even some **L3 hardware offloading!** The mighty Marvell Prestera switch chip dominates most tasks without blowing the **power consumption** up – only up to **27W** (without attachments).

And when it comes to powering – CRS510 is a real joy to work with. It has dual hot-swap power supplies and three other powering options: PoE-in, DC jack, and a 2-pin terminal. No more unnecessary downtimes!

• Specifications

Product code	CRS510-8XS-2XQ-IN
CPU	QCA9531 650 MHz
CPU architecture	MIPSBE
CPU core count	1
Size of RAM	128 MB
Storage	32 MB, Flash
Number of 100M Ethernet ports	1
Number of 25G SFP28 ports	8
Number of 100G QSFP28 ports	2
Switch chip model	98DX4310
Dimensions	320 x 185 x 44 mm
Operating system	RouterOS v7, License level 5
Operating temperature	-40°C to +70°C

• Powering

Number of DC inputs	3 (PoE-in, DC jack, 2-pin terminal)
PoE-in input Voltage	43-57 V Passive PoE or 802.3bt Class 6
DC jack input Voltage	36-57 V
2-pin terminal input Voltage	36-57 V
Number of AC inputs	2
AC input range	100-240 V
Frequency	47-63 Hz
Max power consumption without attachments	31 W
Max power consumption	51 W

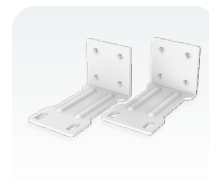
• Included parts



•
2 Power
cords



•
Fastening
set



•
Rack ears